

# WASTE SEGREGATION GUIDELINES

## BIODEGRADABLE WASTE (WET)



### KITCHEN WASTE

Fruits/Vegetable • Egg Shells  
Fish Bones • Tissue paper  
Tea Bags • Leaf Plates



### GARDEN WASTE

(small quantity only)

Fallen Leaves • Twigs • Weeds  
Puja Flowers • Garlands



### E-WASTE

(handle with care)

Batteries • CDs • Thermometers  
Chargers • Adapters • Bulbs  
Mobile phones • CFLs  
Tube Lights  
(to be stored separately)

## NON-BIODEGRADABLE WASTE (DRY)



### PLASTIC

(Must be rinsed if soiled)

Plastic Covers • Bottles • Boxes  
Chips • Toffee Wrappers  
Plastic Cups • Milk  
Curd Packets • PET Bottles

### PAPER

(Dusted and dried)

Newspaper • Magazines  
Stationery • Pizza Boxes  
Cardboard/Tetra Pak Cartons  
Junk Mail • Paper Cups/Plates

### METAL

Foil Containers • Metal Cans

### GLASS

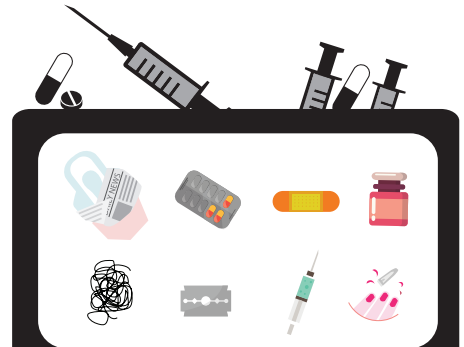
(handle with care)

Unbroken Glass Bottles

### OTHER DRY WASTE

Rubber • Thermocol • Old Mops  
Dusters • Sponges • Cosmetics  
Ceramics • Wooden Chips  
Coconut Shells

## DOMESTIC HAZARDOUS WASTE

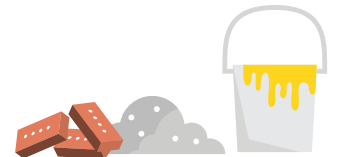


### SANITARY WASTE/ REJECTS

(Use a newspaper for wrapping)  
Diapers • Sanitary Napkins  
Bandages • Condoms • Nails  
Used Tissues • Medicines  
Swept Dust • Hair

### SHARPS

(Small quantities only; wrap in newspaper and handover separately)  
Razors • Blades • Broken glass  
Used syringes • Injection vials



### CONSTRUCTION DEBRIS/INERTS

(Hand over separately)  
Rubble • Paints •  
Silt from drains • Bricks  
Cement Powder • Flower Pots



Do NOT use a plastic liner

[www.alagkaro.com](http://www.alagkaro.com)



/alagkaro

