

IMPACT

Environmental



- More than 33 tons of waste is source segregated daily
- 7.5 tons of wet waste composted daily
- 7 tons of dry waste recycled daily

Social



- One job created per 250 Kg of wet waste processed
- Better working conditions of housekeeping staff and waste workers

Economical



- Savings on collection and tipping fee for the ULB
- Increased revenue for the waste workers due to improved recyclable waste quantity and quality

OUTREACH

SCHOOLS

- ★ 38 Schools / 31000 student outreach

COMMERCIAL

- ★ Cyber city / 10 building campus / 400 offices have implemented source segregation

PUBLIC CAMPAIGNS

- ★ More than 1,10,000 people outreach

RESIDENTIAL COMPLEXES

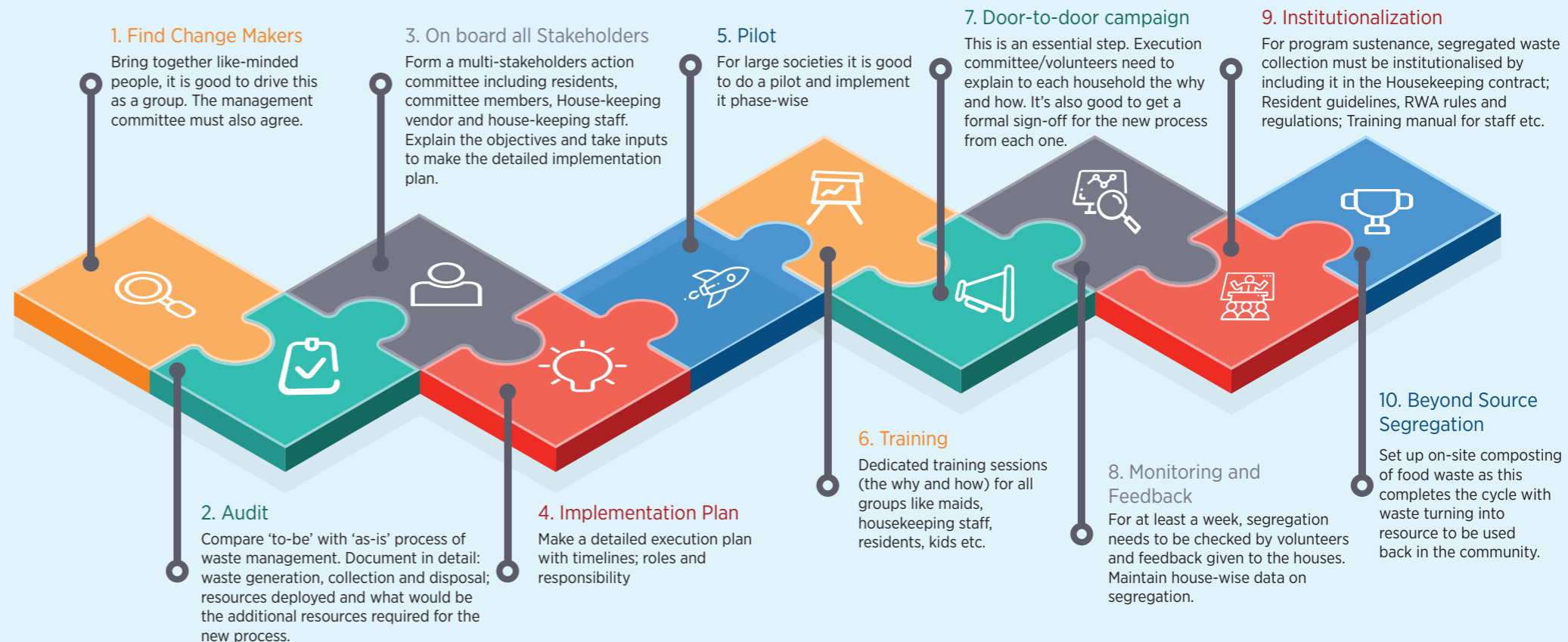
- ★ 50 complexes / 23500 HH reached out
- ★ 36 complexes / 19000 HH implement 3-way source segregation with levels better than 85%
- ★ More than 450 housekeeping staff maids training conducted
- ★ More than 100 residents & volunteers training conducted

WASTE WORKERS

- ★ 525 WW trained on solid waste management
- ★ Health camps & livelihood workshops
- ★ **Litpik** a light & efficient tool for picking up littered waste

Want to implement Waste Segregation in your residential society/school/ office?

Follow this step-by-step process:



For free Training Material / Posters / Manuals / Data Sheets / Cases Studies or any other details visit www.alagkaro.com



Objective of Alag Karo

To establish and sustain segregation of waste at source in residential societies, schools and commercial establishments and develop capacities of the waste collectors to ensure higher recycling rates in Gurugram.

Program Partners



Coca-Cola believes in sustainable business operations with a sharp focus on communities and environment. With a vision of 'World Without Waste', the company is committed to enabling circular economy of solid waste including packaging material so that it becomes part of the economic value chain without adversely impacting our environment.



develoPPP.de

Deutsche Gesellschaft für Internationale Zusammenarbeit (GIZ) GmbH is a public-benefit federal enterprise owned by the German Government that provides services worldwide in the field of international cooperation for sustainable development. For over 60 years, GIZ India has been working jointly with partners for economic, ecological and social development.



Tetra Pak is a leader in providing innovative packaging and processing solutions to the food industry worldwide. Together with our customers we make food safe and available, everywhere for everyone. Tetra Pak has committed to a low-carbon, circular economy where the entire food chain has minimum climate impact by using renewables, sourcing materials responsibly, increasing recycling, as well as committing to resource efficient products and processes.



Saahas, registered in 2001 under the Karnataka Society Act, is a 'not for profit' organisation working in the area of solid waste management. The programs focus on segregation of waste at source, viable and sustainable decentralised waste management solutions and destinations of all waste stream within the framework of SWM Rule 2016.

Source segregation of waste drives Circular Economy



Follow us:

- @alag_karo
- @alagkaro
- @alagkaro

For more details, contact us:

Call: **+91-124-4041 1713** | Email: **alagkaro@saahas.org**

www.alagkaro.com



Segregation is as easy as 1... 2... 3...

